

# Weather Briefing ROSCHIER BALTIC SEA RACE 2022

Pia Hultgren, senior meteorologist

Johan Tuvstedt,  
The Swedish Offshore Association  
SHF.NU



**Havskappseglingsförbundet**



# General synopsis, Thursday 21 July -Sunday 24

- A high-pressure ridge is weakening and moving SE towards Lithuania
- Very warm air exists on Thursday over the sailing area, but will culminate Thursday afternoon. To move the warm air, lows are forming. One will form over Sweden with center around lake Hjälmarén.
- When such warm air exists there is a lot of energy available and with colder air coming aloft, thunderstorms are alike to form.

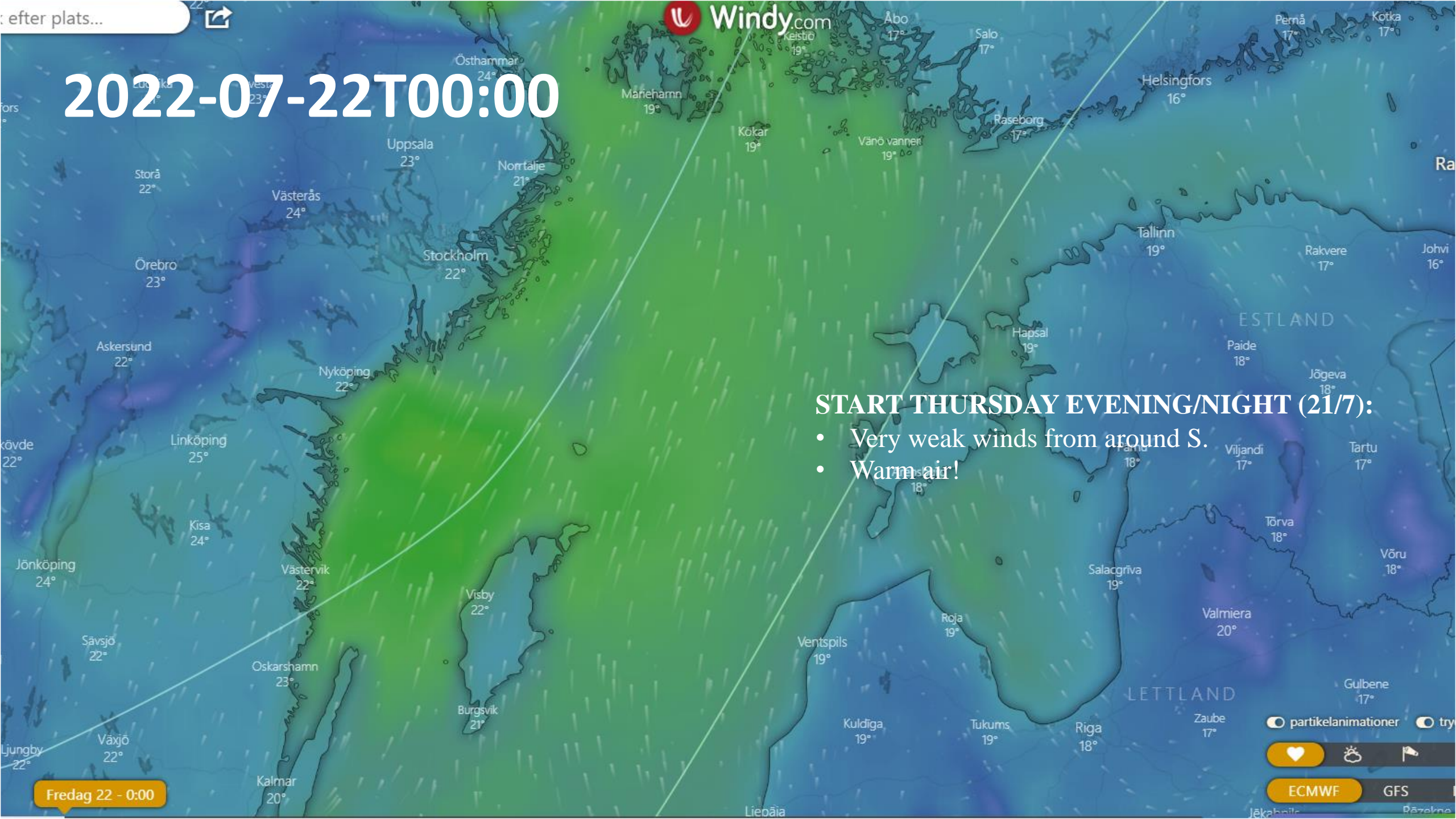
# The important things to be aware of:

Where will the small-scale low pressure centre form. This will rule the wind direction.

- Watch out for thunderstorms
- Try to locate where the wind-holes (calm areas) will form and try to avoid them!
- The cold front on Saturday will be visible. The different models differ significantly in timing.



# 2022-07-22T00:00



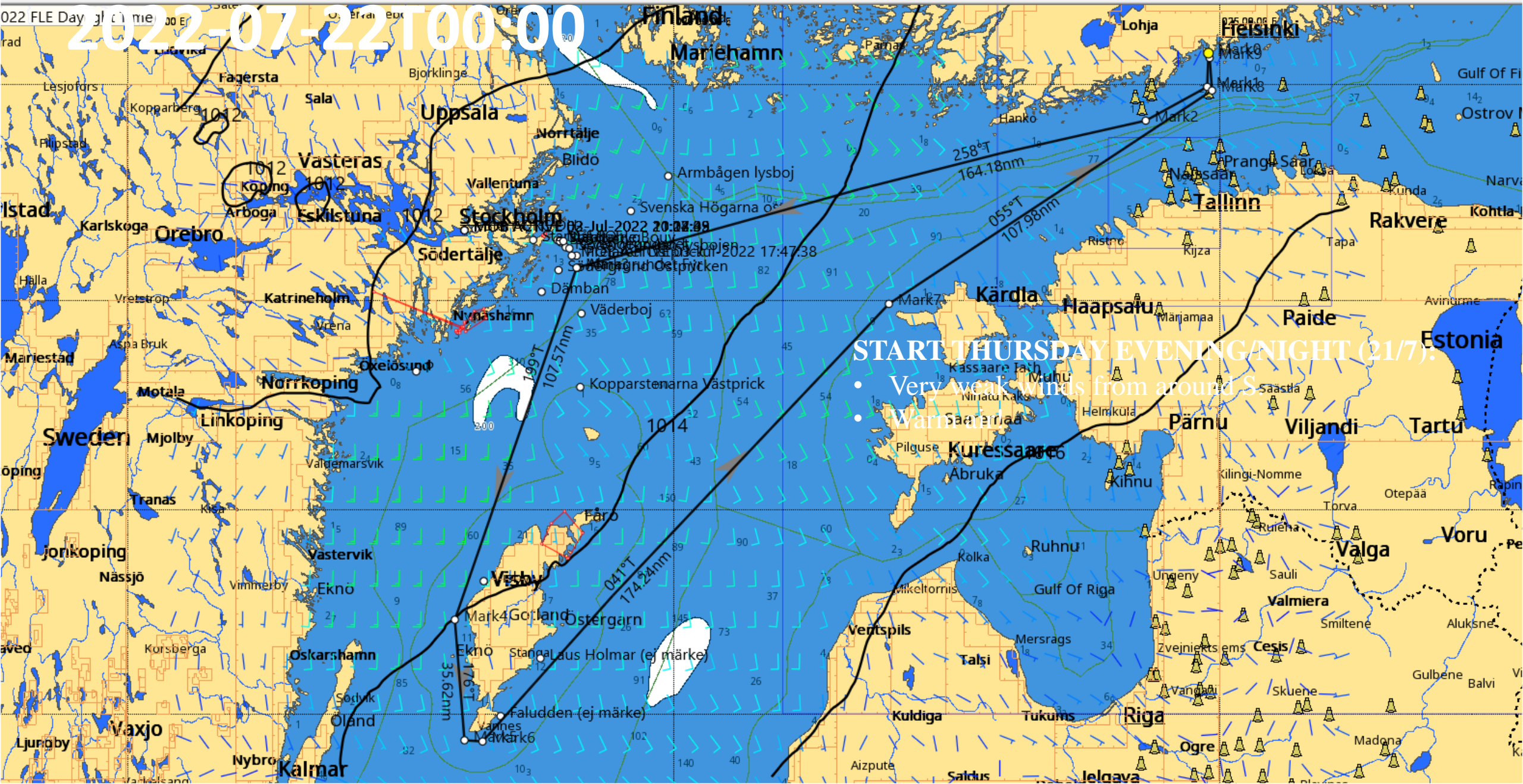
## START THURSDAY EVENING/NIGHT (21/7):

- Very weak winds from around S.
- Warm air!

Fredag 22 - 0:00

partikelanimationer  tryk  
    
 ECMWF GFS

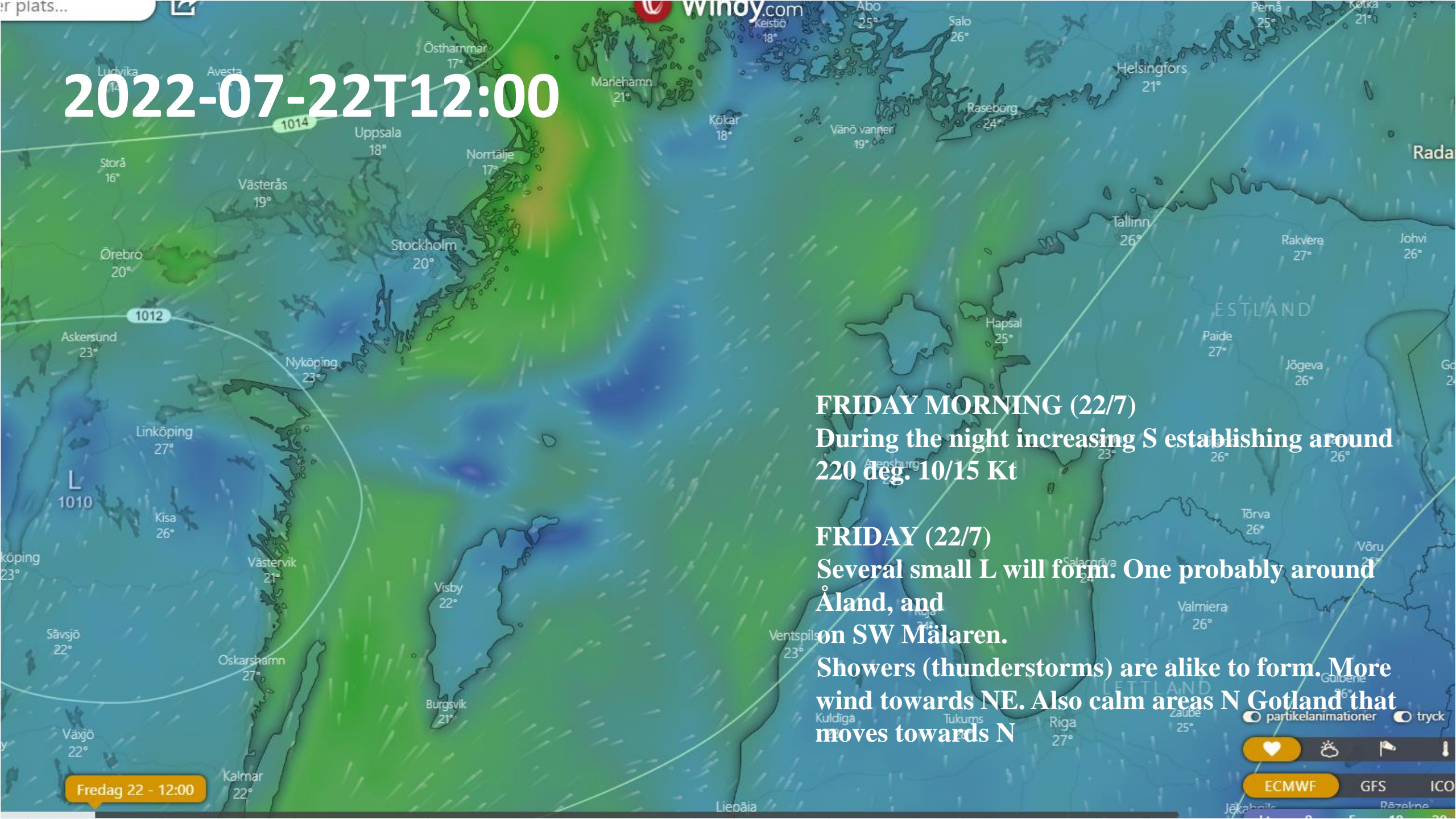
# 2022-07-22T00:00



## START THURSDAY EVENING/NIGHT (21/7):

- Very weak winds from around S
- Warm

2022-07-22T12:00



**FRIDAY MORNING (22/7)**

**During the night increasing S establishing around 220 deg. 10/15 Kt**

**FRIDAY (22/7)**

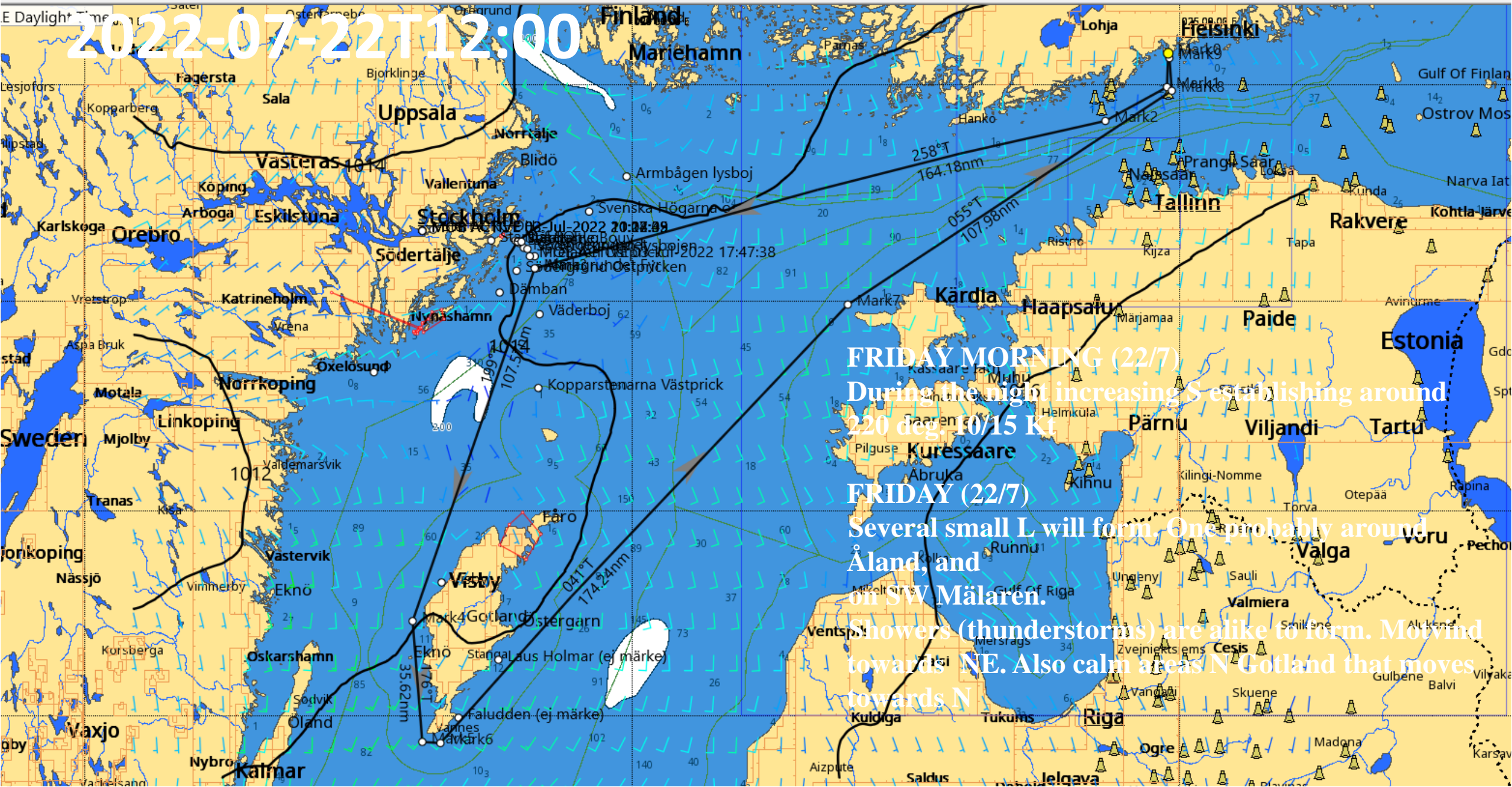
**Several small L will form. One probably around Åland, and on SW Mälaren.**

**Showers (thunderstorms) are alike to form. More wind towards NE. Also calm areas N Gotland that moves towards N**

Fredag 22 - 12:00

partikelanimationer tryck  
ECMWF GFS ICO

2022-07-22T12:00

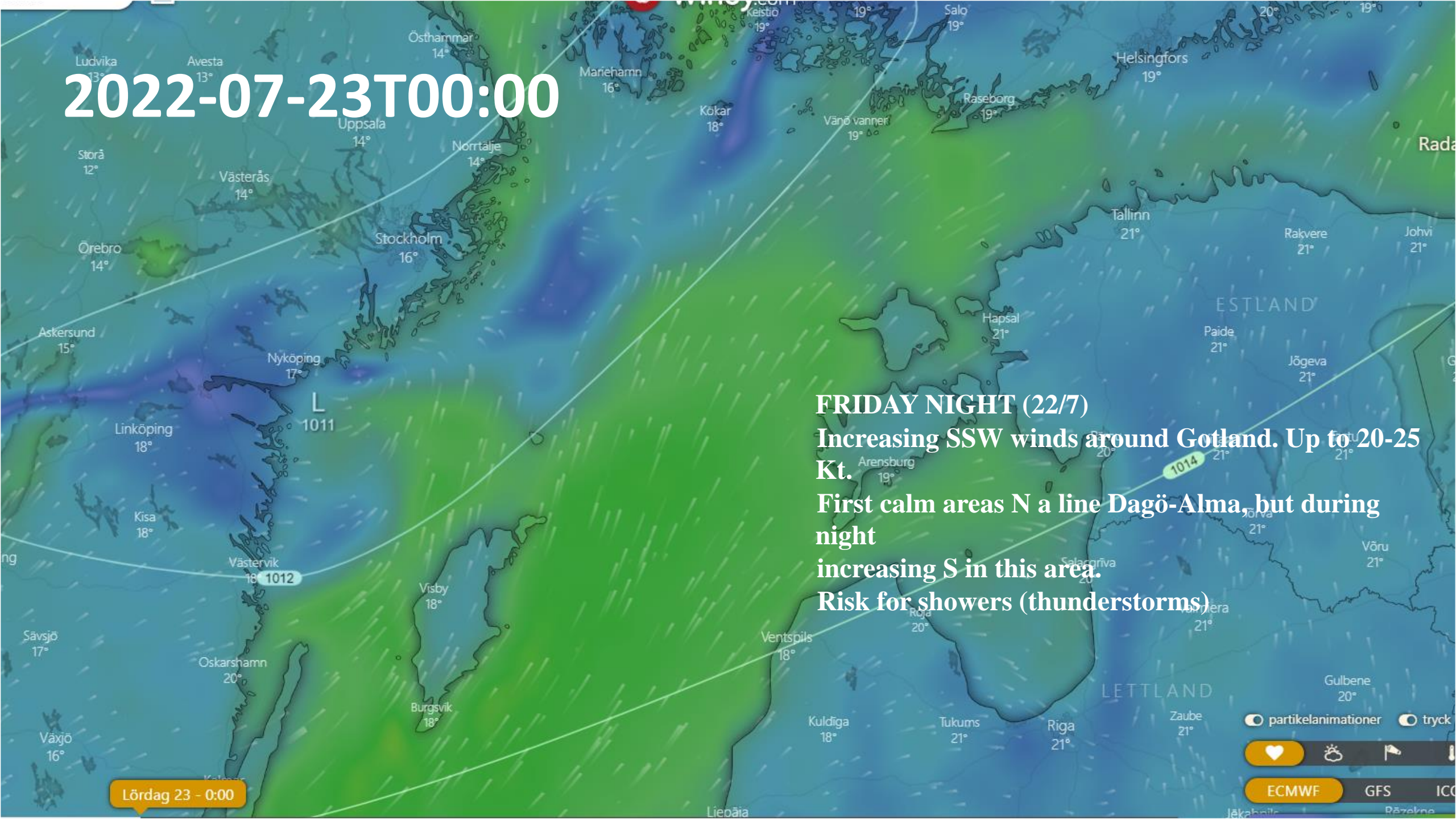


FRIDAY MORNING (22/7)  
During the night increasing S establishing around  
220 deg. 10/15 Kt

FRIDAY (22/7)  
Several small L will form. One probably around  
Åland, and  
on SW Mälaren.

Showers (thunderstorms) are alike to form. Moist  
towards NE. Also calm areas N Gotland that moves  
towards N

2022-07-23T00:00



**FRIDAY NIGHT (22/7)**

**Increasing SSW winds around Gotland. Up to 20-25 Kt.**

**First calm areas N a line Dagö-Alma, but during night**

**increasing S in this area.**

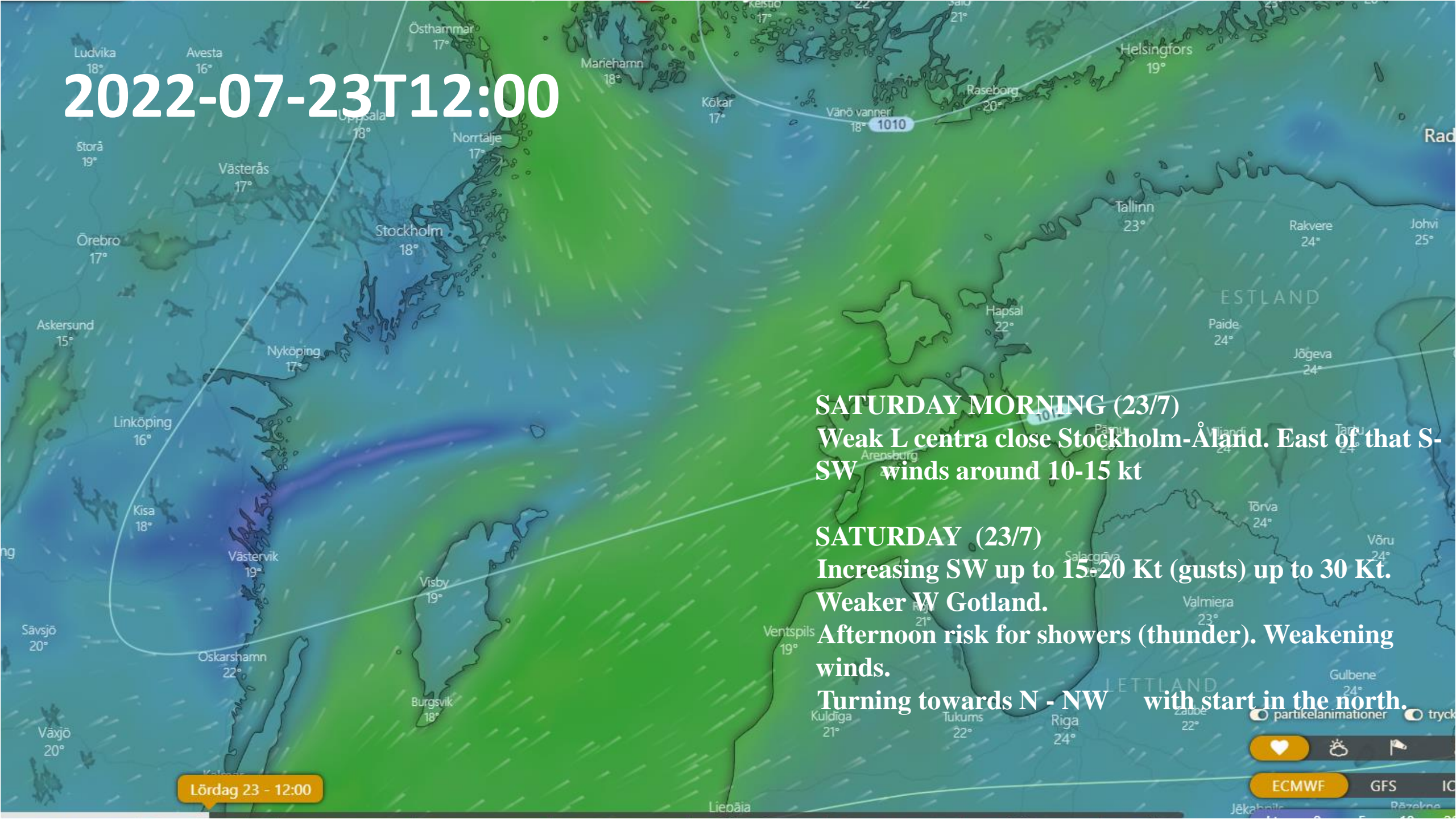
**Risk for showers (thunderstorms)**

Lördag 23 - 0:00

partikelanimationer tryck  
ECMWF GFS ICD



2022-07-23T12:00



**SATURDAY MORNING (23/7)**

**Weak L centra close Stockholm-Åland. East of that S-SW winds around 10-15 kt**

**SATURDAY (23/7)**

**Increasing SW up to 15-20 Kt (gusts) up to 30 Kt.**

**Weaker W Gotland.**

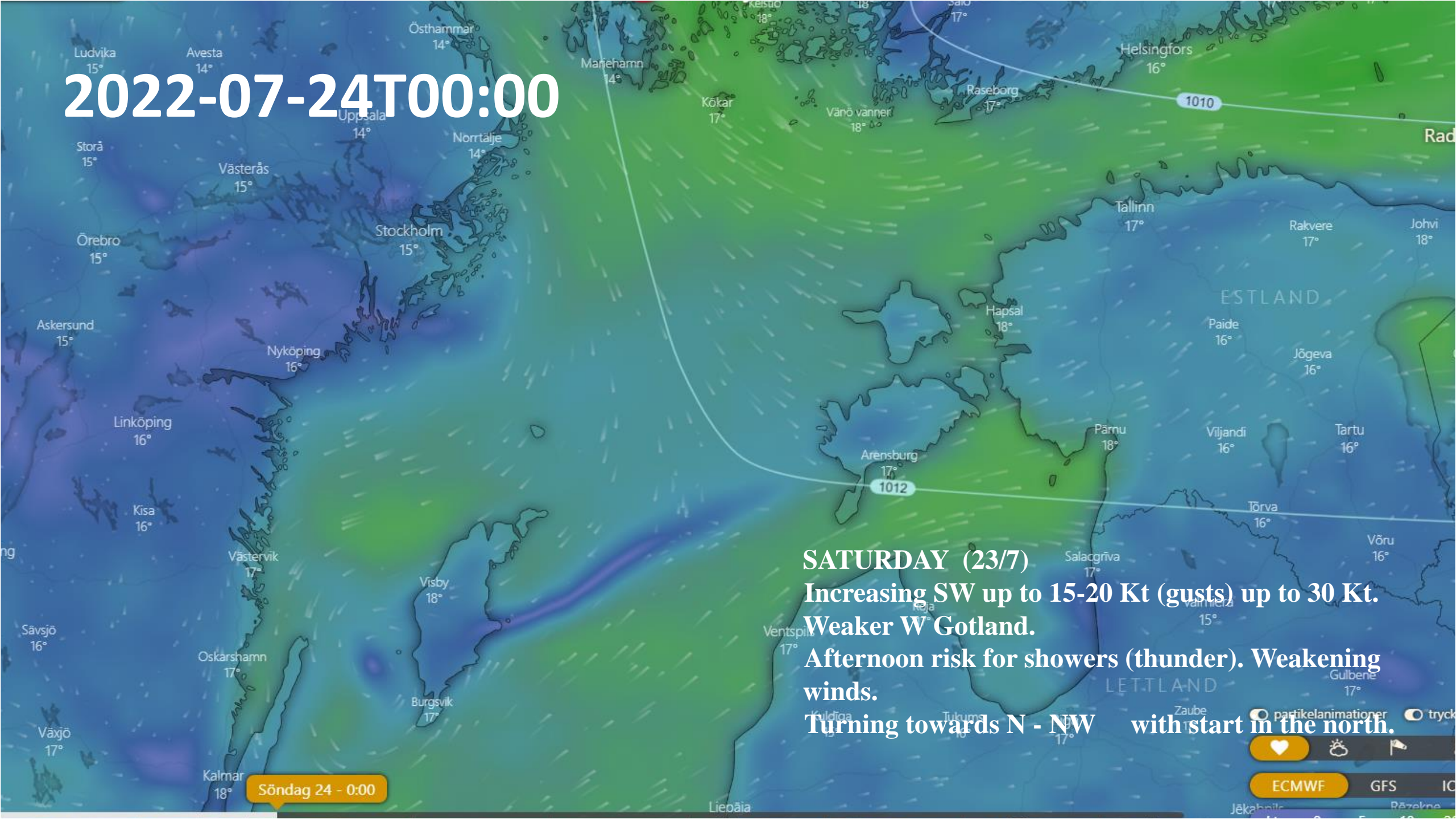
**Afternoon risk for showers (thunder). Weakening winds.**

**Turning towards N - NW with start in the north.**

Lördag 23 - 12:00

partikelanimationer tryck  
ECMWF GFS IC

2022-07-24T00:00



**SATURDAY (23/7)**

**Increasing SW up to 15-20 Kt (gusts) up to 30 Kt.**

**Weaker W Gotland.**

**Afternoon risk for showers (thunder). Weakening winds.**

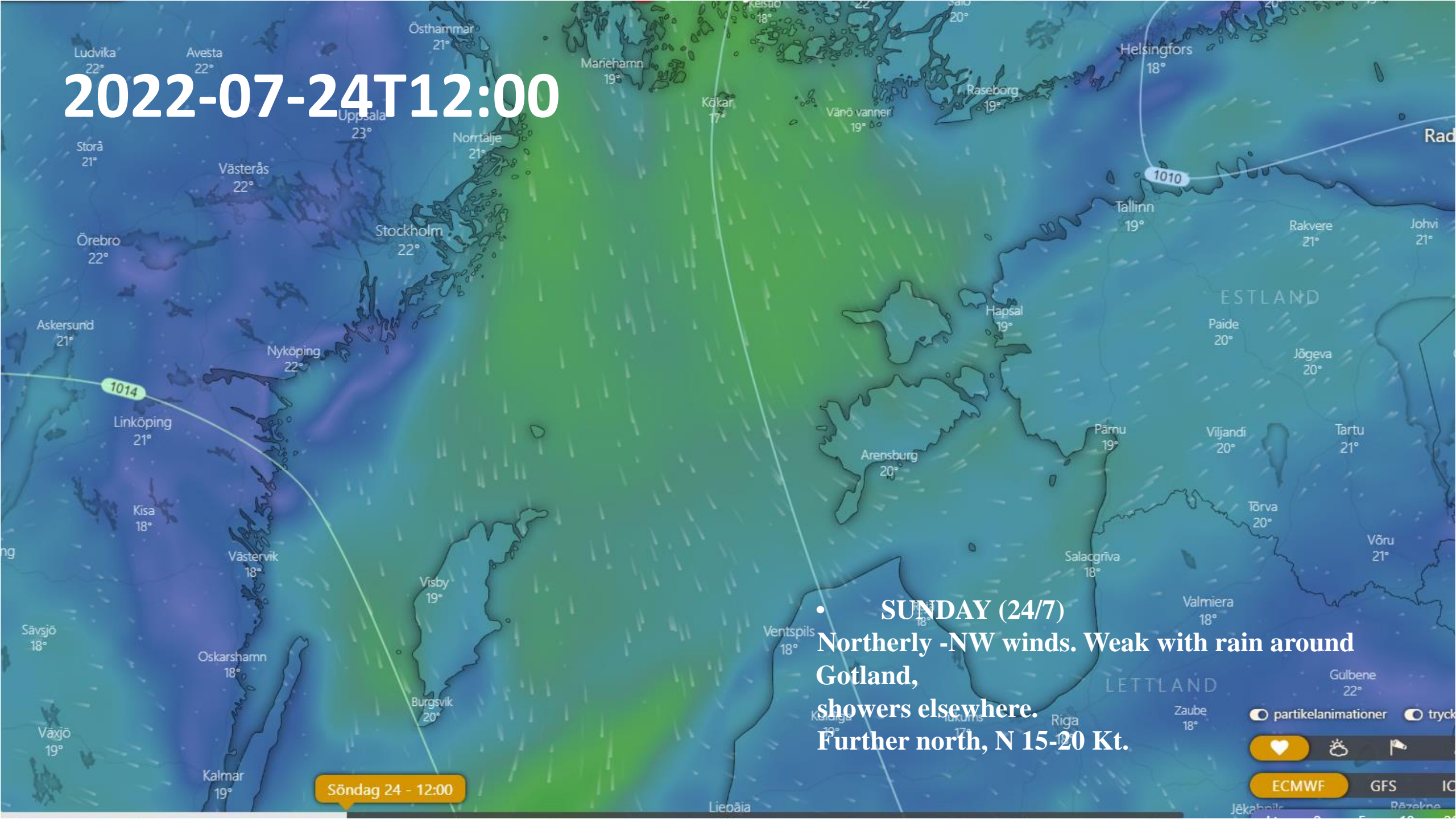
**Turning towards N - NW with start in the north.**

Söndag 24 - 0:00

partikelanimationer tryck

ECMWF GFS IC

2022-07-24T12:00



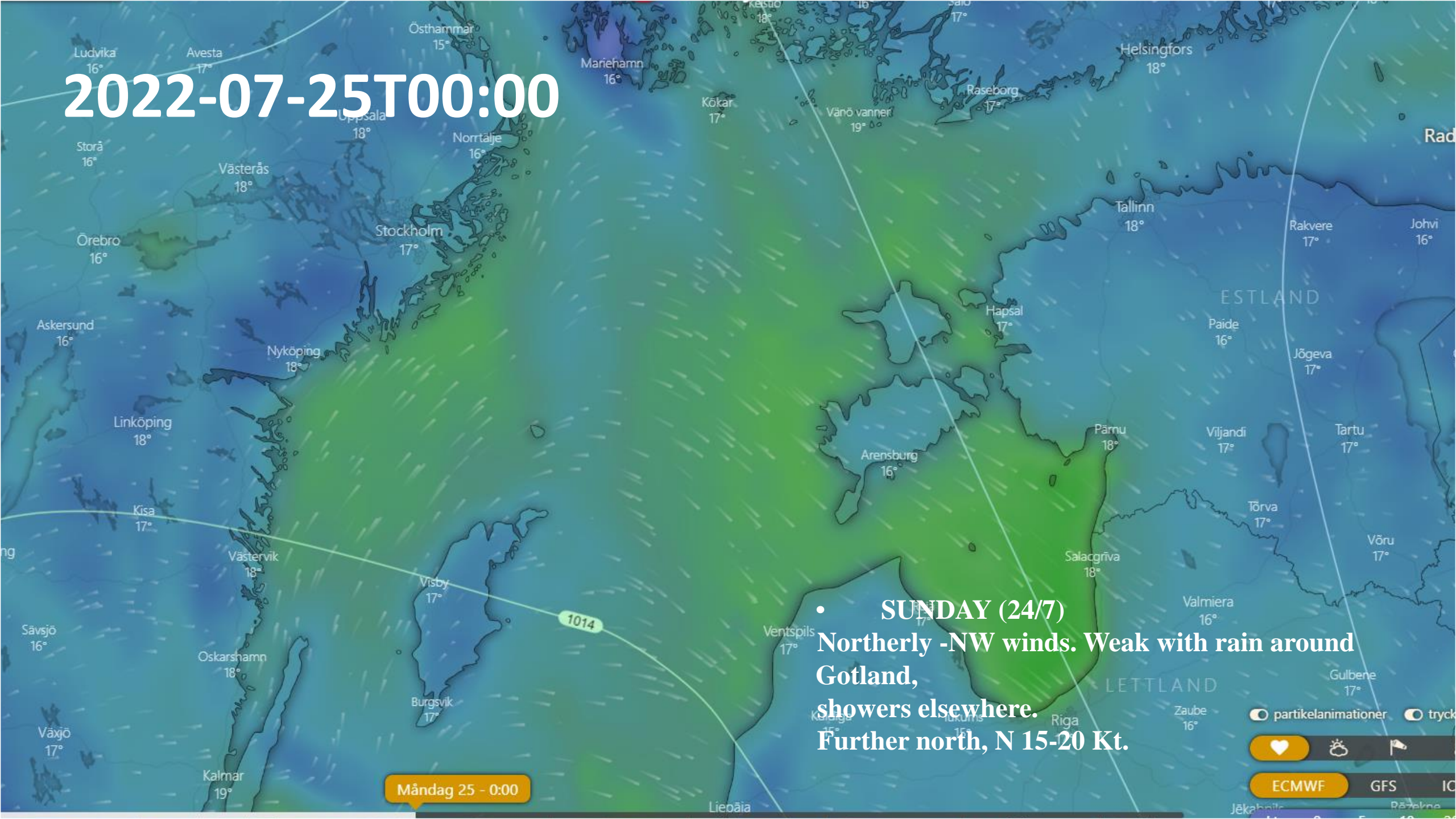
- **SUNDAY (24/7)**  
Northerly -NW winds. Weak with rain around Gotland, showers elsewhere.  
Further north, N 15-20 Kt.

Söndag 24 - 12:00

partikelanimationer tryck

ECMWF GFS IC

2022-07-25T00:00



- **SUNDAY (24/7)**  
Northerly -NW winds. Weak with rain around Gotland, showers elsewhere. Further north, N 15-20 Kt.

Måndag 25 - 0:00

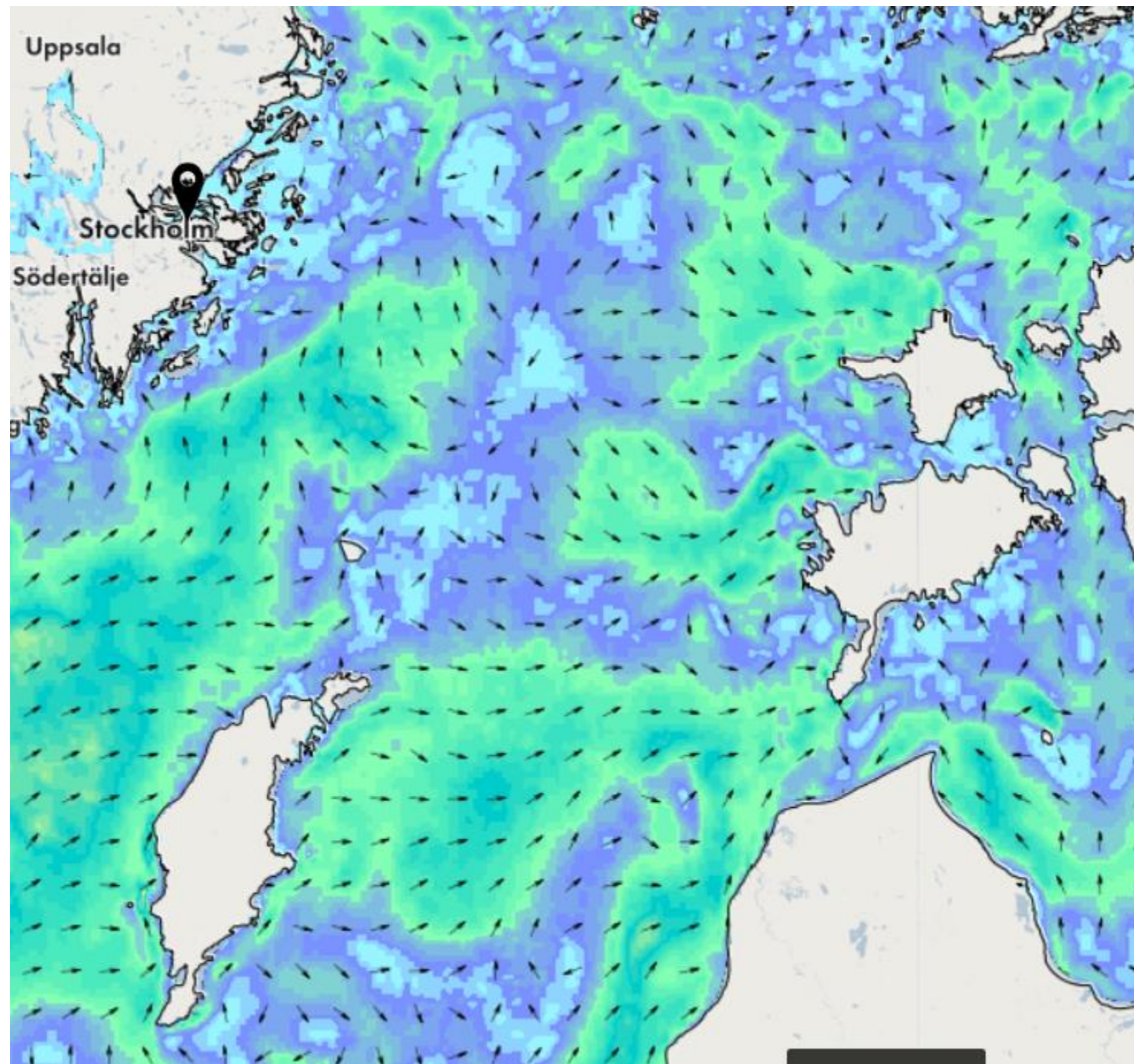
partikelanimationer tryck

ECMWF GFS

# Currents

- Weak but not insignificant
- Local and also local relief
- Mainly wind driven

Source: SMHI.SE



# Sea breezes and local calms / attenuations

- Look for clouds
- Fair weather and favourable direction
- Warm land and cold water
- Will show in very high resolution grib files
- Attenuation close to Gotland nighttime

