



**— ROSCHIER —**  
**BALTIC SEA RACE**

ROSCHIER BALTIC SEA RACE 2022

# **SAILING INSTRUCTIONS**

---

**ORGANISED BY THE ROYAL OCEAN RACING CLUB  
IN ASSOCIATION WITH THE OCEAN RACING ALLIANCE**

THURSDAY 21<sup>ST</sup> JULY 2022

FIRST WARNING SIGNAL 1830HRS

HW HELSINKI 11:08 0.30M

ALL TIMES ARE LOCAL TIMES EXCEPT WHEN STATED OTHERWISE.  
POSITIONS ARE APPROXIMATE IN WGS84 DATUM

# ROSCHIER



## **Mandatory reporting is required prior to the start!**

As per Sailing Instruction 7 - WhatsApp 2022 Roschier Baltic Sea Race

<https://chat.whatsapp.com/JC7brFTyeQ3FZXLYjsNE3Z>

### COMMUNICATION DETAILS

	Race Committee	Race Office Address	Coastguard
<b>Start</b>	Callsign "RORC Ocean Two" VHF Channel 72 (see also SI 13.2) +44 7799 620 731 Email: racing@rorc.org	Marina Bay Helsinki Kanavaranta 4, 00160 Helsinki	Raja Border Guard Finland Tel:+358 2941000
<b>Finish</b>	As above	As above	As above

**Boats retiring from the race must immediately notify the Race Committee.**  
Failure to comply may lead to exclusion from future RORC racing.

**THE ATTENTION OF EVERY PERSON IS DRAWN TO SPECIAL REGULATION 1.02  
AND TO THE IMPORTANCE OF HAVING SUITABLE AND ADEQUATE PERSONAL  
INSURANCE**

**THE RESPONSIBILITY FOR A BOAT'S DECISION TO PARTICIPATE IN A RACE OR TO  
CONTINUE RACING IS HERS ALONE. (RRS FUNDAMENTAL RULE 3)**

**Pre Race:** Please turn on and check your AIS, send Boat Name, Sail Number and number of crew to the WhatsApp group: <https://chat.whatsapp.com/JC7brFTyeQ3FZXLYjsNE3Z> between 1600 and 1830 EEST.

**Post Race:** Complete declaration with finish time and return tracker to the Race Office.

# SAILING INSTRUCTIONS

[NP] Denotes that a breach of this rule will not be grounds for a Protest by a Boat,

[SP] Denotes a rule which a standard penalty may be applied by the Race Committee without a hearing.

[DP] Denotes a rule that the penalty for a breach of that rule may at the discretion of the Protest Committee, be less than disqualification.

## 1 RULES

- 1.1 The regatta will be governed by the rules as defined in The Racing Rules of Sailing (RRS)
- 1.2 RRS part 2 rules will be replaced with the right-of-way rules of the International Regulations for Preventing Collisions at Sea (IRPCAS) between \*sunset and sunrise; or government right-of-way rules if applicable. A scoring penalty (RRS 44.3) will apply for infringements under the right-of-way rules of IRPCAS. See SI 20.1. \*For the purposes of the Roschier Baltic Sea Race 2022, sunset is defined at 2300hrs and sunrise as 0400hrs (EEST), to prevent confusion with regional time variations.
- 1.3 RRS Appendix TS, Version 2 (effective January 1, 2021) Section A applies to all TSS not listed in SI 11. RRS Rule 56.2 is changed to:
  - a) A Traffic Separation Scheme (TSS) shall be understood to mean an area shown on a nautical chart, or in the notice of race, as a TSS.
  - b) A boat shall not impede, or present a threat of impeding, the safe passage of a power-driven vessel in a TSS traffic lane.
  - c) If a commercial, government, or naval power-driven vessel in a traffic lane makes five short and rapid blasts on her whistle (a danger signal, see IRPCAS rule 34(d)) and the boat causing the danger signal can be identified, then the boat is subject to protest under rule 56.2(b).
  - d) If an official complaint/action is lodged against a boat by a commercial, government, or naval power-driven vessel, by a pilot, by vessel traffic service (VTS), or by other local government authority, it shall be presumed that the boat has broken rule 56.2(b).
  - e) The race committee will cooperate with and provide relevant information to VTS and other governmental authorities regarding investigations of boats impeding a power-driven vessel.
- 1.4 RORC Prescriptions to the Racing Rules of Sailing.
- 1.5 World Sailing's Offshore Special Regulations Category 3.
- 1.6 The rules and regulations of appropriate Class rules; IRC Rules Parts A, B & C; FinRating, Class40 and MOCRA Rules.
- 1.7 The Notice of Race.
- 1.8 The Sailing Instructions. Note: The Sailing Instructions shall take precedence over The Notice of Race, this changes RRS 63.7.
- 1.9 There is race/event environmental guidelines in place for the event from ZEROchallenge. These will be place on the event website and competitors are asked to follow these guidelines to help protect the environment.

## 2 EQUIPMENT AND MEASUREMENT CHECKS

- 2.1 A boat or equipment may be inspected at any time for compliance with the rules and Sailing Instructions.

## 3 NOTICES TO COMPETITORS

- 3.1 Notices to competitors will be posted on the Official Notice Board at the Race Office at Marina Bay Helsinki and on the RORC website documents section which can be found at [www.rorc.org](http://www.rorc.org).

## 4 ADVERTISING [NP]

- 4.1 If required yachts shall display advertising supplied by the Organising Authority.
- 4.2 All yachts shall fly the event and sponsor flag/s and shall be flown from the backstay or appropriately visible point near the stern of a boats without backstays, a minimum of 1.5 meters above the deck.

## 5 OFFSHORE TRACKERS

- 5.1 All boats will be provided with a YB Tracker that must be carried and turned on at all times.
- 5.2 Safekeeping of the YB tracker is the responsibility of the boat owner and must be returned to the race office within three hours of finishing or as soon as possible after retiring. Trackers lost, stolen or mislaid and not returned to the RORC will be charged at Euro 800.

## 6 CLASSES

6.1	<table><thead><tr><th>Class</th><th>TCC Range</th></tr></thead><tbody><tr><td>IRC Zero</td><td>1.700 – 1.300</td></tr><tr><td>IRC One</td><td>1.299 – 1.060</td></tr><tr><td>IRC Two</td><td>1.059 and below</td></tr><tr><td>Multihull (MOCRA)</td><td>1.050 and greater</td></tr></tbody></table>	Class	TCC Range	IRC Zero	1.700 – 1.300	IRC One	1.299 – 1.060	IRC Two	1.059 and below	Multihull (MOCRA)	1.050 and greater
Class	TCC Range										
IRC Zero	1.700 – 1.300										
IRC One	1.299 – 1.060										
IRC Two	1.059 and below										
Multihull (MOCRA)	1.050 and greater										

6.2 FinRating classes and results will be provided but all boats shall start within their IRC classes.

6.3 The Race Committee reserves the right to amend the class splits in the light of data before the start of the race.

## 7 NUMBER OF PERSONS ABOARD (NP)

7.1 Before leaving the dock, boats shall ensure they have an accurate crew list lodged online entry system. (<https://rorc.sailgate.com>)

7.2 **After 1600hrs but before 1800hrs on the day of the race each boat shall send a WhatsApp message to: <https://chat.whatsapp.com/JC7brFTyeQ3FZXLyjsNE3Z> The message shall contain the Boat Name, Sail Number and the Number of Persons on Board (POB). E.g: Good Behaviour, GBR1234, 15)**

7.3 In exceptional circumstances when the persons on board do not match the crew list as declared in the online entry system the boat shall inform the Race Committee of the changes and the reasons for failing to complete SI-7.1.

7.4 **A boat shall not sail with a crew member whose Emergency Contact details have not been lodged on online entry system before the start of the race.**

7.5 Should any boat fail to correctly WhatsApp crew numbers and/or fail to identify changes to the crew list, the Race Committee shall, without a hearing, apply a standard time penalty as detailed in SI20.

## 8 STARTING TIMES AND SIGNALS

8.1 The race will be started by using RRS 26, with the warning signal being made 10 minutes before the starting signal.

### Proposed Starting Times

IRC 2 (Warning Flag Numeral 2)	IRC 1 (Warning Flag Numeral 1)	IRC 0 & MOCRA (Warning Flag Numeral 0)	Event	Signals
1830	1840	1850	Warning	Warning flag displayed
1836	1846	1856	Preparatory	Preparatory flag displayed
1839	1849	1859	One -minute	Preparatory flag removed
1840	1850	1900	Start	Warning flag removed

NB - FinRating classes shall start within their IRC classes.

## 9 STARTING LINE

9.1 The starting area is approximately located West of Kustaanmiekkä (south west Suomenlinna) and the Committee Vessel, displaying a blue flag with a white border and a white seahorse, will broadcast her position by VHF.

9.2 The starting line is between a staff displaying an orange flag on the Committee vessel and an orange inflatable buoy in the vicinity of the Husunkivi Special mark (red and white) located at approximately 60° 08 364N 024° 57 366E.

9.3 Boats not yet racing shall stay clear of the Starting Area. Attention is drawn to RRS 24.

## 10 LATE AT THE START

- 10.1 If a boat which has not previously come to the starting area is not off her moorings at her preparatory signal and comes to the starting area under power or being towed, she shall stop her engine (or drop the tow) and complete a Two-Turns penalty as specified in RRS 44.2 before starting.
- 10.2 No penalty will be imposed for an infringement of RRS 42 whilst complying with Sailing Instruction 10.1. This changes RRS 42 and 45.
- 10.3 A boat starting later than 10 minutes after her starting signal shall notify the Race Committee before starting.

## 11 AREAS THAT ARE OBSTRUCTIONS

The following areas are designated as obstructions, and boats shall not enter them:

- 11.1 The Traffic Separation Schemes listed in 11.4 are Obstructions.
- 11.2 Any area prohibited for navigation, such as nature reserves, bird or sea life sanctuaries, is an obstruction.
- 11.3 Boats shall not enter areas that local government or other regulations say are forbidden to enter, forbidden to pass or otherwise. These areas are obstructions.
- 11.4 The area of the following Obstructions is a box of which the co-ordinates of the edges are given. The following areas are designated Obstructions:

Obstruction	Position (WGS84): Latitude Longitude	
Hiiumaa TSS	A - 59° 15'.46N 021° 45'.74E	B - 59° 07'.69N 021° 58'.07E
	C - 59° 04'.24N 021° 49'.56E	D - 58° 59'.96N 021° 43'.51E
	E - 59° 05'.82N 021° 27'.84E	F - 59° 11'.16N 021° 35'.40E
SE Gotland TSS	A - 56° 52'.48N 018° 23'.50E	B - 56° 46'.76N 018° 31'.33E
	C - 56° 43'.13N 018° 22'.62E	D - 56° 49'.06N 018° 14'.79E

## 12 THE COURSE

- 12.1 The course is detailed in Appendix A

## 13 COMMUNICATIONS

- 13.1 The Race Committee may broadcast information on VHF Ch.72, Callsign "Ocean Two".
- 13.2 Boats are reminded of their legal obligation to keep a continuous watch on VHF Ch.16 and maintain a constant watch for shipping movements.**
- 13.3 Boats are required to have their onboard mobile phone switched on at all times.
- 13.4 The Race Committee will inform a boat if it requires them to submit progress reports (i.e. in the event of tracker failure).
- 13.4.1 When required, progress reports should be delivered by text message (+44 7799 620 731) or email (racing@rorc.org).
- 13.4.2 Progress reports should include:
- Name of boat and Sail Number
  - Date/time/mark being rounded
  - Course and Speed over the Ground
  - Wind Direction and Speed
  - Names of any boats nearby
- 13.5 Inter-boat communication calls should when possible be on DSC or VHF Ch.16 as a calling channel and VHF Ch.06 as a working channel.
- 13.6 Boats with communications in addition to VHF should act as a link, taking other boats' reports on VHF and passing them to the Race Committee.

## 14 TIME LIMIT

- 14.1 There is no time limit for the race.

## 15 THE FINISH

- 15.1 All boats are requested to listen on VHF Ch.72 from 5 miles off and call "Ocean Two" to assist with identification when 15 minutes from the finish.
- 15.2 The finishing line will be formed between the flagpole carrying a blue flag on Vattunokka and East Cardinal Mark at approximately N 60 09,05, E 24 54,05. (approximate back bearing of 280deg from the mark to the flagpole). An orange buoy may be used to indicate a shallow area close to Vattunokka and should be left to port.
- 15.3 To aid with identification, when finishing at night, boats are required to shine a spotlight on their sail numbers and call "Ocean Two" on VHF Ch.72 immediately after finishing.
- 15.4 Boats are reminded to take their own finishing times together with the names of the boats ahead and astern, if any. Finishing times shall be delivered to the RORC as soon as possible using a Declaration Form.

## 16 RACE FINISH DECLARATIONS [NP]

- 16.1 After finishing or retiring, boats shall complete and submit a Declaration Form to the Race Committee together with the YB tracker as soon as possible, but **not later than 24 hours after the end of the race**. Every member of the crew shall sign the Declaration Form. Failure to comply with this rule may result in the boat being excluded from the results. When a boat retires from a race she shall write the reasons on her Declaration Form.
- 16.2 When after a race a boat cannot promptly deliver the Declaration Form she shall without delay telephone the Race Committee, confirm that she has finished racing and give her time of finishing. In this case the completed Declaration Form may be scanned and emailed to racing@rorc.org. The YB tracker must also be returned.
- 16.3 Failure to return the YB tracker at the conclusion of the race will incur a Euro 800 charge.

## 17 RETIREMENTS AND NON STARTERS

- 17.1 Retirements and non-starters must promptly inform the Race Committee or in an emergency **Raja Border Guard Finland**. It is imperative that boats that are no longer competing can be excluded from any Search and Rescue operation. **Failure to comply with this rule may lead to disqualification or exclusion from future RORC racing.**

## 18 USE OF ENGINE

- 18.1 When a boat uses its engine, e.g. to avoid collision, in a grave emergency, or as per SI 19 Temporary Discontinuance of Racing, the facts shall be reported on her Declaration Form.

## 19 TEMPORARY DISCONTINUANCE OF RACING

- 19.1 If a boat temporarily stops racing, they shall immediately inform the Race Committee explaining the circumstances and their plan by text message (+44 7799 620 731) or email (racing@rorc.org).
- 19.2 If a boat makes fast in order to take shelter or in an emergency, the crew may temporarily leave the boat to handle her moorings. If she uses her engine for propulsion she shall, on re-joining the race, return to the spot where she began to use her engine, turn off her engine and continue to race from that spot. She shall report the circumstances on her Declaration Form. This changes RRS 45 and 47.2.
- 19.3 A boat that is secured in harbour may receive any assistance to effect repairs or take on any supplies or equipment. This changes RRS 41 and 47.1.

## 20 PENALTY SYSTEM

### 20.1 Scoring Penalty:

- 20.1.1 When the right-of-way rules of IRPCAS apply (between the hours of local sunset and sunrise) a scoring penalty applies (RRS 44.3).
- 20.1.2 The scoring penalty will be 10 minutes added to the boat's corrected time for each penalty.
- 20.1.3 When a scoring penalty does not apply, a yacht may take a Two Turns Penalty for breaking a rule of RRS Part 2 or a One Turn Penalty when she may have broken RRS 31, as described in RRS 44.2.

### 20.2 Standard Penalties:

- 20.2.1 The Standard Penalty is time penalty of 10%.
- 20.2.2 When at a boat's starting signal she is subject to RRS 29.1 Individual Recall and she fails to comply with RRS 29.1 to start correctly, the Race Committee shall, without a hearing, apply a penalty and she shall be deemed to have started correctly. This changes RRS63.1, RRS28.1 and A5. [SP]
- 20.2.3 For a breach of RRS 28 (Sailing the Course) the Race Committee shall, without a hearing, apply a penalty. This changes RRS63.1 and A5. [SP] [DP]
- 20.2.4 For a breach of any area designated an Obstruction the Race Committee may apply a penalty unless the breach was unavoidable, unintentional and no advantage was gained. This changes RRS63.1 & A5. [SP] [DP]

- 20.2.5 Should the Race Committee consider a standard penalty to be inappropriate, it shall protest the boat.
- 20.2.6 If, in a valid hearing brought by the Race Committee, or by another boat, a boat is found to have infringed RRS 28, 29.1 or Sailing Instruction 11, the penalty will not be less than the standard penalty. [DP]

### **20.3 Grounds for Protest:**

20.3.1 Breaches of SI 4, 4, 8 and 15.1 will not be grounds for protest by a boat. This changes RRS 60.1a. [NP]

### **20.4 Other Penalties:**

20.4.1 When the Protest Committee decides that a boat, that is party to a protest hearing, has broken a rule other than RRS Part 1 and 2 and that no serious damage or injury was caused, and no significant advantage has been gained, the penalty shall be at the discretion of the Protest Committee. [DP]

## **21 PROTESTS AND REQUESTS FOR REDRESS**

- 21.1 Protests may be written on plain paper, but Protest forms are available at the Race Office. Protests and requests for redress or reopening shall be delivered there within the appropriate time limit.
- 21.2 The protest time limit is 3 hours after the protesting boat finishes.
- 21.3 Notices will be posted no later than 30 minutes after the protest time limit for the last boat to finish the race.
- 21.4 The notification of a Protest by the Race or Protest Committee against a competitor as required under RRS 61.1(b) or (c) shall consist of a notice on the Official Notice Board at the finish.
- 21.5 An International Jury has been appointed. Decisions made by the International Jury will not be subject to appeal under RRS 70.5.

## **22 SCORING**

- 22.1 The Scoring System for the race, defined in Notice of Race 13.1, will apply. The scoring system will be the High Points System as detailed in the notice of race.
- 22.2 RRS Appendix A is changed; paragraph A4 will not apply.
- 22.3 Points will be multiplied by the Points Factor of 1.4 when applied to the RORC Season's Points Championship.
- 22.4 A boat that is penalised under RRS 30.2 or that takes a penalty under RRS 44.3(a) shall be scored points as provided in RRS 44.3(c).

## **23 TROPHIES AND PRIZES**

- 23.1 The following Trophies and prizes will be awarded:
- IRC Overall
  - IRC Classes
  - IRC 2H
  - FinRating Classes
  - FinRating 2H
- 23.2 Prize giving will take place on Wednesday 27<sup>th</sup> July 1900 at Katajanokka Casino

## **24 RISK STATEMENT**

- 24.1 Rule 3 of the Racing Rules of Sailing states: "The responsibility for a boat's decision to participate in a race or to continue racing is hers alone."
- 24.2 Sailing is by its nature an unpredictable sport and therefore inherently involves an element of risk. By taking part in the event, each competitor agrees and acknowledges that:
- a) they are aware of the inherent element of risk involved in the sport and accept responsibility for the exposure of themselves, their crew and their boat to such inherent risk whilst taking part in the event;
  - b) they are responsible for the safety of themselves, their crew, their boat and their other property whether afloat or ashore;
  - c) they accept responsibility for any injury, damage or loss to the extent caused by their own actions or omission;
  - d) their boat is in good order, equipped to sail in the event and they are fit to participate;
  - e) the provision of a race management team and other officials and volunteers by the event organiser does not relieve them of their own responsibilities;
  - f) they are responsible for ensuring that their boat is equipped and seaworthy so as to face extremes of weather; that there is a crew sufficient in number, experience and fitness to withstand such weather; and that the safety equipment is properly maintained, stowed, in date and familiar to the crew.

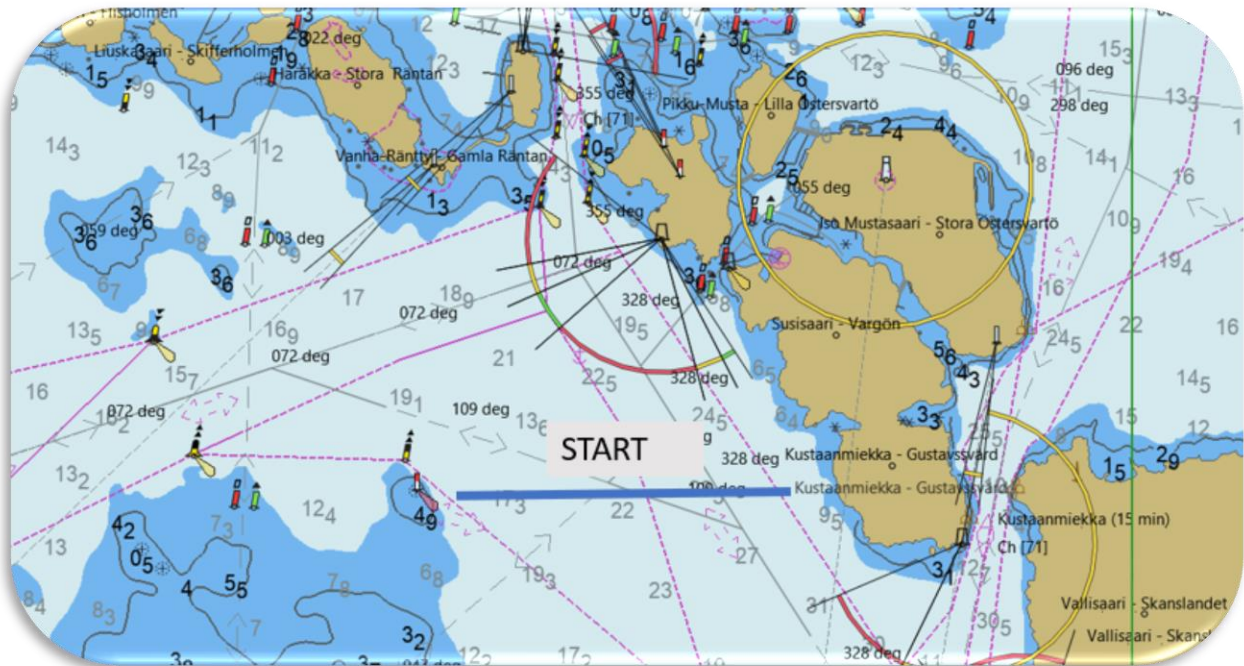
## **25 INSURANCE**

- 25.1 Each boat shall ensure that their boat is adequately insured, against all third party claims.

## 26 RIGHTS TO USE NAME AND LIKENESS

26.1 By participating in this event, competitors automatically grant to the Organising Authority and the event sponsors the right, in perpetuity, to make, use, and show, at their discretion, any photography, audio and video recordings, and other reproductions of them made at the venue or on the water from the time of their arrival at the venue, until their final departure, without compensation.

### THIS INFORMATION IS PROVIDED AS A GUIDE FOR COMPETITORS FOR THE START AND FINISH LINES





## APPENDIX A – THE COURSE

Order	Mark	Required Side; Leave to:	Position (WGS84)* Latitude	Position (WGS84)* Longitude
	<b>Start Line</b>			
1	Västergrund North mark SE of Husunkivi	Starboard	60° 07'.97N	024° 58'.64E
2	Västergrund E mark	Starboard	60° 07'.83N	024° 58'.83E
3	Västergrund E mark S of mark 2	Starboard	60° 07'.53N	024° 58'.77E
4	Maraskärsgrund (S mark, NW Harmaja)	Starboard	60° 06'.56N	024° 57'.00E
5	Harmaja Lighthouse	Port	60° 06'.31N	024° 58'.53E
6	W Mark SE of Harmaja	Port	60° 06'.04N	024° 57'.87E
7	Flathällagrundet E mark	Starboard	60° 05'.02N	024° 57'.88E
8	Helsinki lighthouse	Starboard	59° 56'.95N	024° 55'.57E
9	All Finland islands and rocks showing permanently above HW	Starboard		
10	** Hiiumaa TSS			
11	Almagrundet lighthouse	Port	59° 09'.31N	019° 07'.56E
12	Gotland main island	Port		
13	South mark S of Gotland	Port	56° 53'.40N	018° 07'.46E
14	South mark off S of Gotland	Port	56° 52'.66N	018° 10'.54E
15	** TSS SE of Gotland			
16	** Hiiumaa TSS			
17	Helsinki lighthouse	Port	59° 56'.95N	024° 55'.57E
18	E mark at Ulkomatala	Port	59° 59'.58N	024° 53'.31E
19	E mark at Halliluoto/Gråskärsbådan	Port	60° 02'.20N	024° 53'.42E
20	M1	Port	60° 07'.58N	024° 54'.17E
21	M3	Port	60° 08'.00N	024° 54'.16E
	<b>Finish Line</b>			

**Approximate Distance: 635nm**

**\* All positions are approximate. \*\* See Section 11 – Obstructions.**